

MAHIKI

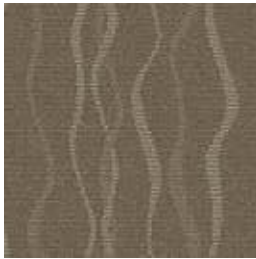




CONSTRUCTION	LOOP
PILE FIBER COMPOSITION	100% Olefin
YARN TYPE	BCF
DYE METHOD	Solution Dyed
PILE WEIGHT	650 g/m <sup>2</sup>
NUMBER OF TUFTS	184860/m <sup>2</sup>
TUFTING GAUGE	1/12"
PRIMARY BACKING	Non-Woven
SECONDARY BACKING	<b>StableShield</b> - 100% Vinyl
OPTIONAL BACKINGS	<b>Recova</b> -PU Cushion, <b>EcoShield</b> -100% Recycled Vinyl
TILE SIZE	50 cm x 50 cm
PILE HEIGHT	2.3 mm / 5.5 mm
TOTAL PILE HEIGHT	8.0 mm
PILE TREATMENT	INVISTA Anti-Soil Treatment, Anti-Microbial (Optional)
RECOMMENDED INSTALLATION	Quarter Turn or Brick

# SPECIFICATIONS

# COLOURLINE



Mahiki - 647



Mahiki - 648



Mahiki - 649



Mahiki - 652



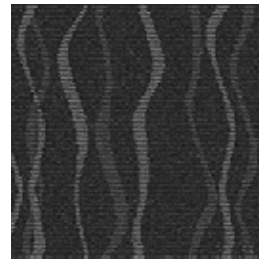
Mahiki - 655



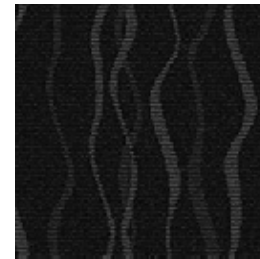
Mahiki - 657



Mahiki - 677



Mahiki - 678

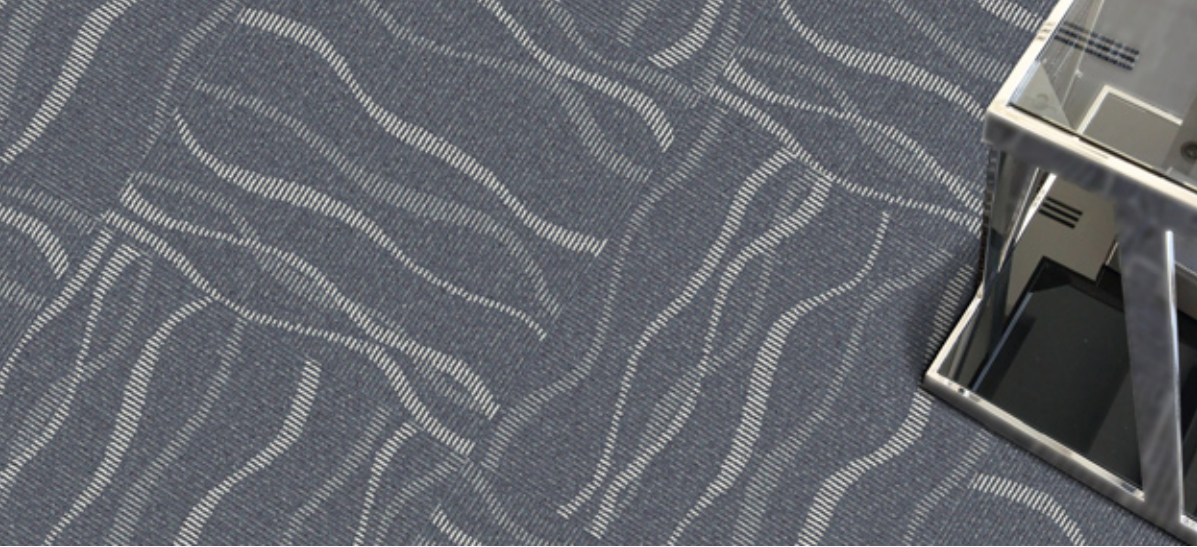


Mahiki - 679



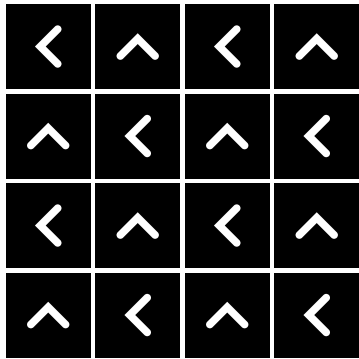
Mahiki - 685



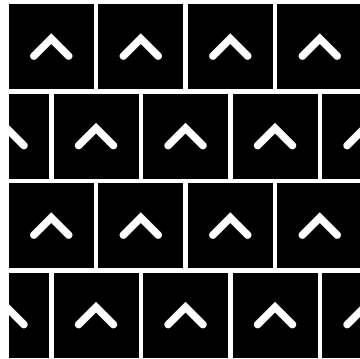


# HOW TO INSTALL

**QUARTER TURN**



**BRICK**





Standard  
*CARPETS*

[www.standardcarpets.com](http://www.standardcarpets.com)